

## Release Notes

### *iPassConnect 1.02 for PocketPC, PocketPC 2002, & Handheld PC 2000*

Thank you for signing up for the iPass Secure Connectivity Network. This document summarizes changes in the iPassConnect client for the Win CE 3.0 OS, including PocketPC, PocketPC 2002, and Handheld PC 2000 devices. Due to the large number of devices for these platforms, iPass can not guarantee support for all devices. Please refer to the "Currently Supported Devices" list before installing this software to your PDA.

#### Currently Supported Devices

Manufacturer	Model	Installation package
<b>Casio</b>	Cassiopeia E125	Setup_PcktPC_v102.exe
	Cassiopeia E200	Setup_PcktPC2002_v102.exe
<b>Compaq</b>	3600 Series (PocketPC)	Setup_PcktPC_v102.exe
	3700, 3800 Series (PocketPC 2002)	Setup_PcktPC2002_v102.exe
<b>Hewlett Packard</b>	Jornada 540 series (PocketPC)	Setup_PcktPC_v102.exe
	Jornada 560 series (PocketPC 2002)	Setup_PcktPC2002_v102.exe
	Jornada 720 series Handheld Computer	Setup_HandPC2000_v102.exe

#### Installation Instructions

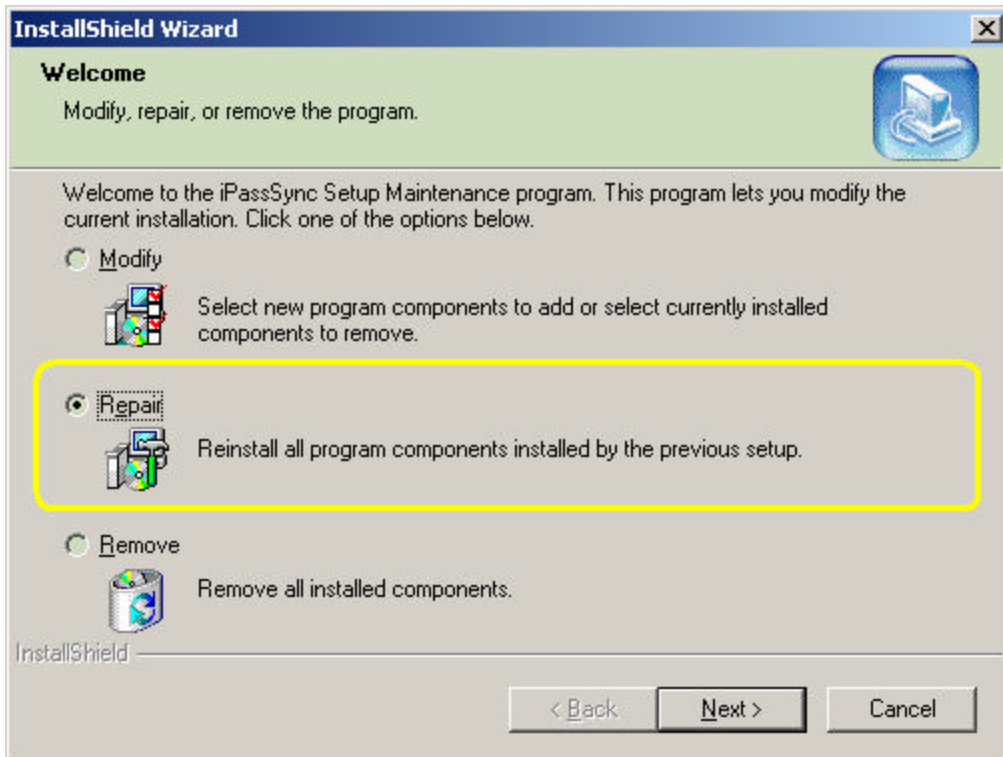
If you have a previous version of iPassConnect for PDA installed, please refer to the following "Upgrading Instructions" section.

- (1) Before installing, confirm that iPassConnect 2.0 or later for Windows is installed on your host computer. It is strongly advised that you perform a phonebook update before continuing.
- (2) Download the appropriate Setup package to your host PC and double click the executable to begin the installation process. Please follow the instructions contained in the installation dialogs.  
It is recommended that you accept the default installation location.
- (3) After installing the software to your PDA, launch iPassSync on the host PC to select and sync access points to your PDA device.  
You are now ready to use iPassConnect 1.02 on your PDA device!

#### Upgrading Instructions

**Important** – in order to upgrade previous versions of iPassConnect for PDA, you must completely remove all components. To do so, please follow these steps:

- (1) On the PDA device, from the Start menu, select Settings/Remove Programs
- (2) Select iPassConnect and Remove
- (3) Launch File Explorer and locate the directory My Device/Program Files/iPass  
Delete this directory.
- (4) After removing all components from the device, run the Setup package from your host computer.  
Choose the "Repair" option from the installation dialog:



- (5) Complete the installation process. Use iPassSync to reselect and sync your phonebook to the PDA device.

### **Recent Changes**

**PocketPC 2002 support** – the 1.02 release now supports PocketPC 2002. When using iPassConnect to access the Internet, please make sure that your Connections settings has the following entry: "My network card connects to: The Internet"

**Dial Location** – previous versions of iPassConnect used the default "Work" dialing location to initiate calls. In certain instances, iPassConnect was unable to correctly set the dialing rules when using this dialing location. Version 1.02 now creates an "iPASS" dialing location used exclusively by iPassConnect.

**Access point filtering** – The phonebook sync utility now filters out certain access points that require dial-up scripting. The Windows CE operating system does not currently support dial-up scripting, making connections to these access points unreliable.

**SQM connection quality data** – Version 1.02 corrects an error in the SQM module which previously failed to report cancelled connection attempts. All dial attempts, whether cancelled, successful or unsuccessful are now correctly reported to the iPass network quality server.